



Siniat

Smarter  
Rooms

# Drywall sound solutions

A technical guide to cutting  
out noise with plasterboard,  
simply and effectively.



# CONTENTS

**Intro:** The ins and outs  
of noise pollution 01

What difference do our  
sound solutions make? 02

Noisy neighbours 04

Noisy kids 06

Noise from above 08

## THE INS AND OUTS OF NOISE POLLUTION

Life is getting louder and noise pollution in and around our homes is becoming harder to ignore.

With TVs, music systems, games consoles and home cinemas, loud technology can now be found in most rooms of a house. More cars, trains and planes are increasing external noise, and of course there are noisy neighbours to contend with too.

But now, we at Siniat have mastered the science of silence, and found you a simple solution to reduce noise in your customers' homes.

**This leaflet will show you how  
to cut down noise.**

We've devised three solutions that solve the most common noise problems in the home, and will show you how to install the products you need to do it.

# WHAT DIFFERENCE CAN OUR SOUND SOLUTIONS MAKE?



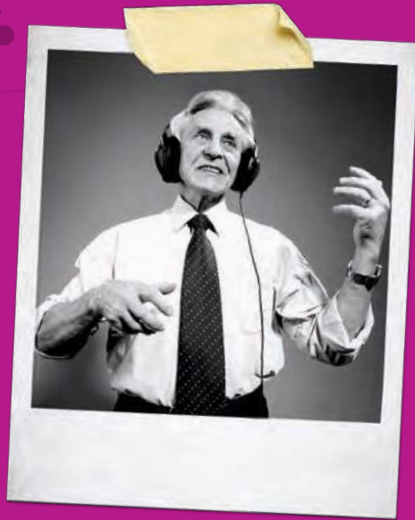
Check out the table below to see how our dB solution ratings equate to real life scenarios of noise pollution in the home.

R <sub>w</sub> dB	RELATIVE ACOUSTIC PRIVACY
30	Normal conversation can be distinguished
35	Loud conversation can be distinguished
40	Loud conversation can be heard but not distinguished
45	Loud conversation cannot be heard
50	Shouting can be heard but not distinguished
55	All speech is totally blocked with a high level of privacy from other domestic noise
60	High level of privacy including noise from television or stereos

## DON'T FIT AND FIDDLE: FOLLOW THESE INSTALLATION INSTRUCTIONS TO THE LETTER

Any acoustic solution is only effective if it uses the right components and installation technique. Removing or changing components may reduce the level of sound resistance you achieve.

# NOISY NEIGHBOURS



According to a 2014 'Which?' study, more than a quarter of adults in the UK have had problems with noisy neighbours. And ironically, most people suffer in silence.

## THE SIMPLE SINIAT SOLUTION

Use our cost-effective solution on any dividing wall between properties to cut out the noise from next door, including sound from TVs, HiFi's... and other people.

**Create a 50mm cavity filled with 25mm glass mineral wool and two layers of 12.5mm GTEC dB board to upgrade the acoustic performance of existing masonry or block walls.**

## THE SOLUTION

### BOARD



GTEC dB Board

### FRAME



Metal Angle 90°



Dryliner Track



Extended Reach Bracket



Dryliner Channel

### FIX



GTEC Wafer Head Screw



GTEC Pan Head Screw



GTEC Self Tapping screw

### FINISH



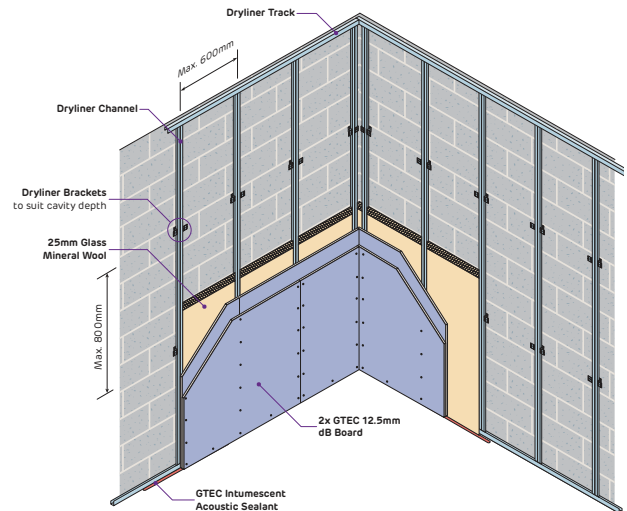
Joint Filler Xtra



Joint Cement Xtra



Joint Tape



## NO NOISY NEIGHBOURS – AN INSTALLATION GUIDE

- Fix Dryliner Track to floor and ceiling, creating a 50mm cavity
- Fix Extended Reach Bracket to wall in two places 800mm and 1600mm from the floor for each vertical channel
- Fix Dryliner Channel to Dryliner Track and brackets
- Install the 25mm glass mineral wool in the cavity ensuring no gaps
- Fix 2 layers of dB board to Dryliner Track and Channel at 300mm centres
- Seal perimeter gaps with intumescent acoustic sealant

# NOISY KIDS



Most of us know just what it's like to have kids around – musical instruments, TVs, music systems and games consoles all add to the din.

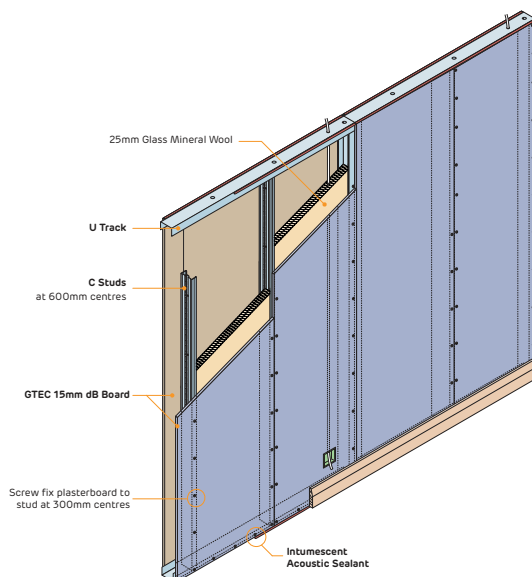
## THE SIMPLE SINIAT SOLUTION

For retrofits, the drylining option suggested for noisy neighbours is an ideal solution when fixed to the existing room walls.

If your installation is a new partition wall, part of an extension, or a new build property, then the metal stud partition detailed here is the perfect choice.

## THE SOLUTION

<b>BOARD</b>		15mm dB board	<b>FIX</b>		GTEC Wafer Head Screw
<b>FRAME</b>		70mm U track			GTEC Pan Head Screw
		70mm C Stud			GTEC Self Tapping screw
			<b>FINISH</b>		Joint Filler Xtra
					Joint Cement Xtra
					Joint Tape



## TURN THE VOLUME DOWN – AN INSTALLATION GUIDE

- Fix 70mm U Track to floor and ceiling
- Fix 70mm C studs the 2 studs at either end to the wall and the U track
- Insert the remaining C studs but leave unfixed to allow for movement
- Install the 25mm glass mineral wool in the cavity ensuring no gaps
- Fix 15mm GTEC dB board on either side of the partition staggering joints. To increase the effectiveness add an additional dB board to each side
- Seal perimeter gaps with Intumescent acoustic sealant

# NOISE FROM ABOVE














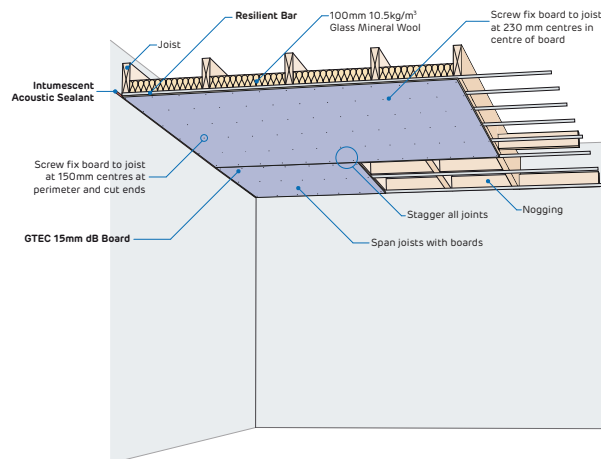
Modern flats have to reach strict sound transfer levels, but in older properties the sound barrier can be as little as the floorboards in the room above and the plasterboard on your ceiling.

## THE SIMPLE SINIAT SOLUTION

Make the most of our simple retrofit option for a property with wooden joists. It needs some removal of existing plasterboard, but after that there are only a few new components to install.

## THE SOLUTION

 <b>BOARD</b>	 15mm dB board	 <b>FIX</b>	 GTEC Wafer Head Screw
 <b>FRAME</b>	 GTEC Resilient Bar		 GTEC Pan Head Screw
			 GTEC Self Tapping screw
		 <b>FINISH</b>	 Joint Filler Xtra
			 Joint Cement Xtra
			 Joint Tape



## OUR ABOVE BOARD SOLUTION – AN INSTALLATION GUIDE

- Remove existing plasterboard if present
- Install 100mm of 10.5kg/m<sup>3</sup> glass mineral wool between the existing joists
- Screw GTEC Resilient Bar 150mm centres at right angles to wooden joists (joists max 450mm apart)
- Screw GTEC 15mm dB board to the Resilient Bar at 150mm centres around the perimeter of the board and at 230mm centres in the middle of the board
- Ensure that the board screws are into the Resilient Bar only and don't hit any of the joists as this will allow sound to transfer
- Stagger all joints to help prevent cracking
- To increase effectiveness further, install a second layer of GTEC dB board



## SOUND TIPS

For a step-by-step video guide and tips on using metal frame systems and installing sound reduction systems, check out our Siniat YouTube channel:

[youtube.com/siniatukchannel](https://youtube.com/siniatukchannel)

And to discover more about how our products, services and expertise can help you help your customers, visit the new Siniat website:

[www.siniat.co.uk](http://www.siniat.co.uk)

## SINIAT LIMITED

Marsh Lane, Easton-in-Gordano  
Bristol BS20 0NE  
T +44 (0)1275 377 773  
[www.siniat.co.uk](http://www.siniat.co.uk)

Siniat Copyright 2016

