

ROCKCLOSE®

Minimises thermal bridging at door and window reveals in cavity wall constructions



ROCKCLOSE®

ROCKCLOSE® is an insulated damp proof course, developed to minimise thermal bridging at door and window reveals in masonry cavity walls.

The product consists of a strip of semi-rigid non-combustible stone wool insulation, bonded to a black polyethylene DPC. Installed as work proceeds between the outer masonry leaf and internal closer block prior to the frames being fitted.





Advantages

- Minimises thermal bridging around openings
- Integral damp proof course
- One-hour fire integrity and 30 minutes insulation
- One width covers most applications
- Self-supporting and easy to handle
- Simple to install

Description

ROCKCLOSE® is an insulated cavity closer. The product is designed to minimise thermal bridging around windows and doors in first-fix cavity wall installations with a returning inside leaf. Designed to be installed as work proceeds between the outer masonry leaf and internal closer block prior to the frames being fitted.

The product consists of a strip of semi-rigid non-combustible ROCKWOOL insulation, bonded to a black polyethylene DPC.

Applications

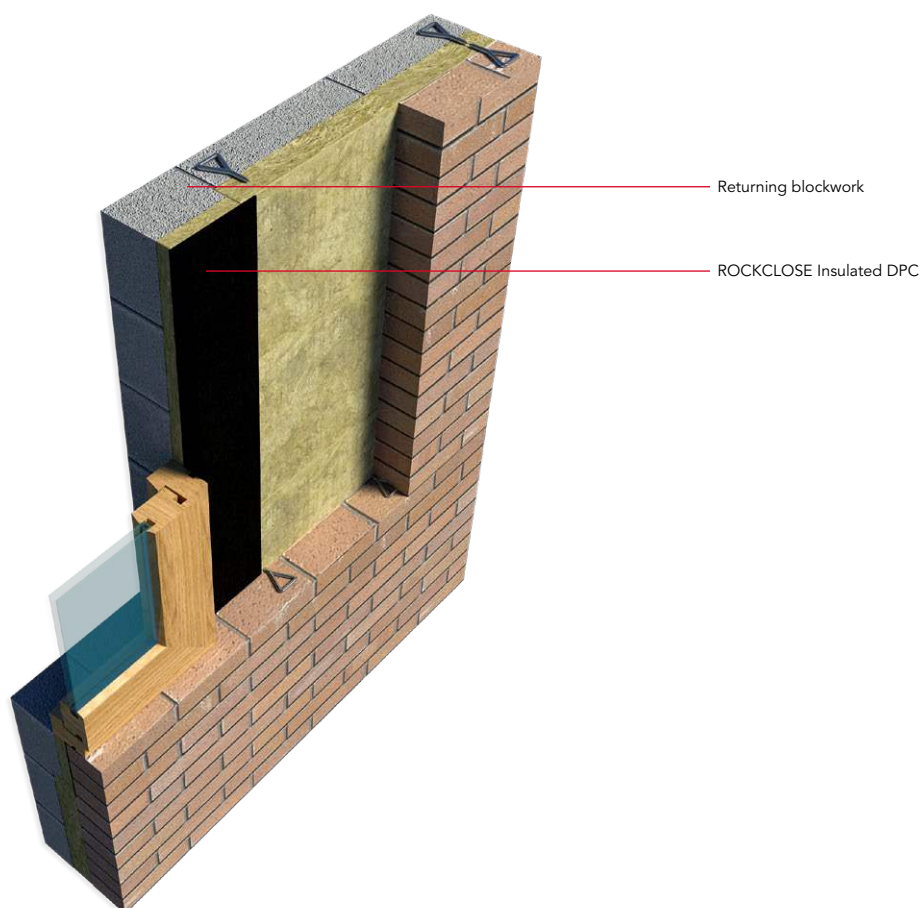
ROCKCLOSE® has been specifically developed to minimise thermal bridging at door and window reveals whilst also providing a fire-resistant cavity closer.

The effect of thermal bridging has been a long-recognised problem, which has been given even greater significance under the new Part L Building Regulations. In a typical building, as much as 20% heat loss can occur around door and window reveals if not correctly addressed. Building Regulations require that thermal bridges that occur at junctions between building elements are included in the calculation of transmission heat losses.

Performance

For masonry cavity walls, ROCKWOOL ROCKCLOSE® will exceed the minimum thermal resistance path through the closer of not less than $0.45\text{m}^2\text{ K/W}$ as required under Accredited Construction Details (see table below).

Thickness (mm)	Thermal resistance ($\text{W/m}^2\text{K}$)
20	0.570
30	0.857
50	1.430



Dimensions

Insulation			DPC		
Thickness	Width	Length	Length	Width	Bottom lap
20, 30 & 50mm	100mm	1200mm	1300mm	180mm (40mm lap each side of the insulation)	100mm

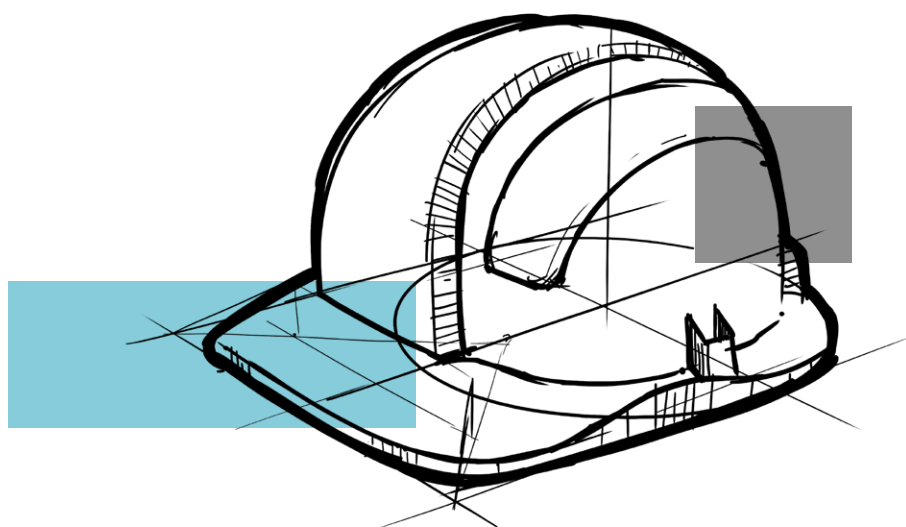
Installation

ROCKWOOL ROCKCLOSE® is suitable for vertical and horizontal applications and is designed to be installed as work proceeds, between the outer masonry leaf and closing inner leaf prior to fitting of window and door frames. The product can be easily cut on site as required, but always ensure the 100mm DPC lap is retained.

- Where more than one length is required, the adjoining lengths of insulation are simply tightly butt jointed together
- The upper piece must be installed with the 100mm DPC overlap at the bottom, dressed over the DPC face of the lower piece
- DPC side laps: The DPC overlaps the insulation by 40mm on each side. On the cavity side, the DPC should extend into the cavity along the inside face of the outer leaf. On the opening side, the DPC should be formed against the window/door frame and sill in the traditional method
- Installation must follow normal good practice for the detailing of DPCs, as set out in BS EN 1996-2: 2006, BS 8000-3: 2001 & BS 8215

Technical information

The following NBS clauses include ROCKCLOSE® F30 :18, F30:180.



Sustainability

As an environmentally conscious company, ROCKWOOL promotes the sustainable production and use of insulation and is committed to a continuous process of environmental improvement.

All ROCKWOOL products provide outstanding thermal protection as well as four added benefits:



Fire resistance



Acoustic comfort



Sustainable materials



Durability

Health & Safety

The safety of ROCKWOOL stone wool is confirmed by current UK and Republic of Ireland health & safety regulations and EU directive 97/69/EC: ROCKWOOL fibres are not classified as a possible human carcinogen.

A Material Safety Data Sheet is available and can be downloaded from www.rockwool.co.uk to assist in the preparation of risk assessments, as required by the Control of Substances Hazardous to Health Regulations (COSHH).

Environment

Made from a renewable and plentiful naturally occurring resource, ROCKWOOL insulation saves fuel costs and energy in use and relies on trapped air for its thermal properties.

ROCKWOOL insulation does not contain (and has never contained) gases that have ozone depletion potential (ODP) or global warming potential (GWP).

ROCKWOOL is approximately 97% recyclable. For waste ROCKWOOL material that may be generated during installation or at end of life, we are happy to discuss the individual requirements of contractors and users considering returning these materials to our factory for recycling.



Interested?

For further information, contact the Technical Solutions Team on 01656 868490 or email technical.solutions@rockwool.co.uk

Visit www.rockwool.co.uk to view our complete range of products and services.

Copyright ROCKWOOL September 2018.

The ROCKWOOL Trademark

ROCKWOOL® - our trademark

The ROCKWOOL trademark was initially registered in Denmark as a logo mark back in 1936. In 1937, it was accompanied with a word mark registration; a registration which is now extended to more than 60 countries around the world.

The ROCKWOOL trademark is one of the largest assets in the ROCKWOOL Group, and thus well protected and defended by us throughout the world.

If you require permission to use the ROCKWOOL logo for your business, advertising or promotion. You must apply for a Trade Mark Usage Agreement. To apply, write to:
marketcom@rockwool.com.

Trademarks

The following are registered trademarks of the ROCKWOOL Group:

ROCKWOOL®

ROCKCLOSE®

RAINSSCREEN DUO SLAB®

HARDROCK®

ROCKFLOOR®

FLEXI®

BEAMCLAD®

FIREPRO®

Disclaimer

ROCKWOOL Limited reserves the right to alter or amend the specification of products without notice as our policy is one of constant improvement. The information contained in this brochure is believed to be correct at the date of publication. Whilst ROCKWOOL will endeavour to keep its publications up to date, readers will appreciate that between publications there may be pertinent changes in the law, or other developments affecting the accuracy of the information contained in this brochure. The applications referred to within the brochure do not necessarily represent an exhaustive list of applications. ROCKWOOL Limited does not accept responsibility for the consequences of using ROCKWOOL in applications different from those described within this brochure. Expert advice should be sought where such different applications are contemplated, or where the extent of any listed application is in doubt.

© ROCKWOOL 2018. All rights reserved.

Photography and Illustrations

The product illustrations are the property of ROCKWOOL Ltd and have been created for indicative purposes only.

Unless indicated below, the photography and illustrations used in this guide are the property of ROCKWOOL Limited. We reserve all rights to the usage of these images.

If you require permission to use ROCKWOOL images, you must apply for a Usage Agreement. To apply, write to:
marketcom@rockwool.com.

September 2018

ROCKWOOL Limited

Pencoed
Bridgend
CF35 6NY

Tel: 01656 862 621

info@rockwool.co.uk

rockwool.co.uk

